

# ENGSKO FLOUR SIFTER

## type FS 1000



Flour sifter with four outlets for sifting of flour into different grades

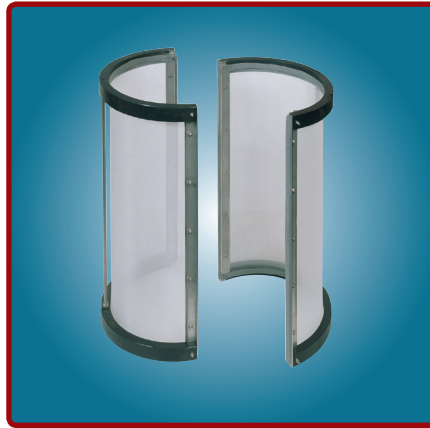
•  
For decentralized flour production

•  
Stainless steel construction

•  
Changeable sifting screens



Screen in sifting chamber



Frame with sifting texture



Rotor in sifting chamber

## Flour Sifter

The ENGSKO Flour Sifter type FS 1000 is developed to perform the final process of the decentralized flour plant. The flour sifter has three built-in sifting chambers, each with an outlet (No. 1, 2 and 3).

Furthermore, there is a remaining external outlet (No. 4). The sifting chambers Nos 1, 2 and 3 are used for sifting of flour and can be equipped with different screen sizes. The 4th outlet is for discharge of bran directly into a sack.

A standard the Flour Sifter type FS 1000 is delivered with the following screen sizes:

1st outlet 160 my (GOST 49, 52).  
2nd outlet 210 my (GOST 35, 38).  
3rd outlet 500 my (GOST 16).

Furthermore, one set of screen frames for 1st outlet (long frame) and one set of screen frames for 2nd and 3rd outlets

(short frames) are included in the delivery. One set of screen texture is also included in the delivery as per standard.

The following screen sizes are included:

160, 180, 200, 250, 500 and 1000 my.

Other screen sizes ranging from 90 to 4000 my are available upon special request.

## Operation of Flour Sifter

The ENGSKO Flour Sifter type FS 1000, made from stainless steel, is of the rotary type with five wings and four catchers bringing the flour into rotation in the chambers. Furthermore, the catchers are mounted obliquely in horizontal direction in order to push the flour particles to the sifting chambers where these are sifted according to sizes.

The FS 1000 works according to the air circulation principle and is adjusted to sift the flour into various degrees of fineness. Thus combining the FS 1000 with the decentralized flour plants, many possibilities arise.

### Technical Data

Motor power, kW	2,20
Capacity, kg/h	800
Standard screen, 1st outlet, my	160
Standard screen, 2nd outlet, my	210
Standard screen, 3rd outlet, my	500
4th outlet	Open

### Dimensions

Length, mm	2408
Width, mm	576
Height, mm	2278
Weight, kg	327

**ENGSKO A/S**  
Moellestensvej 13  
DK-8900 Randers  
Denmark

Phone: (+45) 86 42 64 88  
Fax: (+45) 86 41 36 22  
E-mail: [info@engsko.com](mailto:info@engsko.com)  
Web: [www.engsko.com](http://www.engsko.com)

Manufactured by

